

# Lower Mississippi River Resource Assessment

Edward P. Lambert

Mississippi River Parkway  
Commission Annual Meeting

19 September 2014



US Army Corps of Engineers  
BUILDING STRONG®

# Lower Mississippi River Resource Assessment WRDA 2000 Section 402

*(a) ASSESSMENTS- The Secretary, in cooperation with the Secretary of the Interior and the States of Arkansas, Illinois, Kentucky, Louisiana, Mississippi, Missouri, and Tennessee, shall undertake for the Lower Mississippi River system --*

*(1) an assessment of information needed for river-related management;*

*(2) an assessment of natural resource habitat needs; and*

*(3) an assessment of the need for river-related recreation and access.*

*(b) PERIOD- Each assessment referred to in subsection (a) shall be carried out for 2 years.*

*(e) AUTHORIZATION OF APPROPRIATIONS- There is authorized to be appropriated \$1,750,000 to carry out this section.*

# LMRRA

Lower Mississippi River  
Resource Assessment

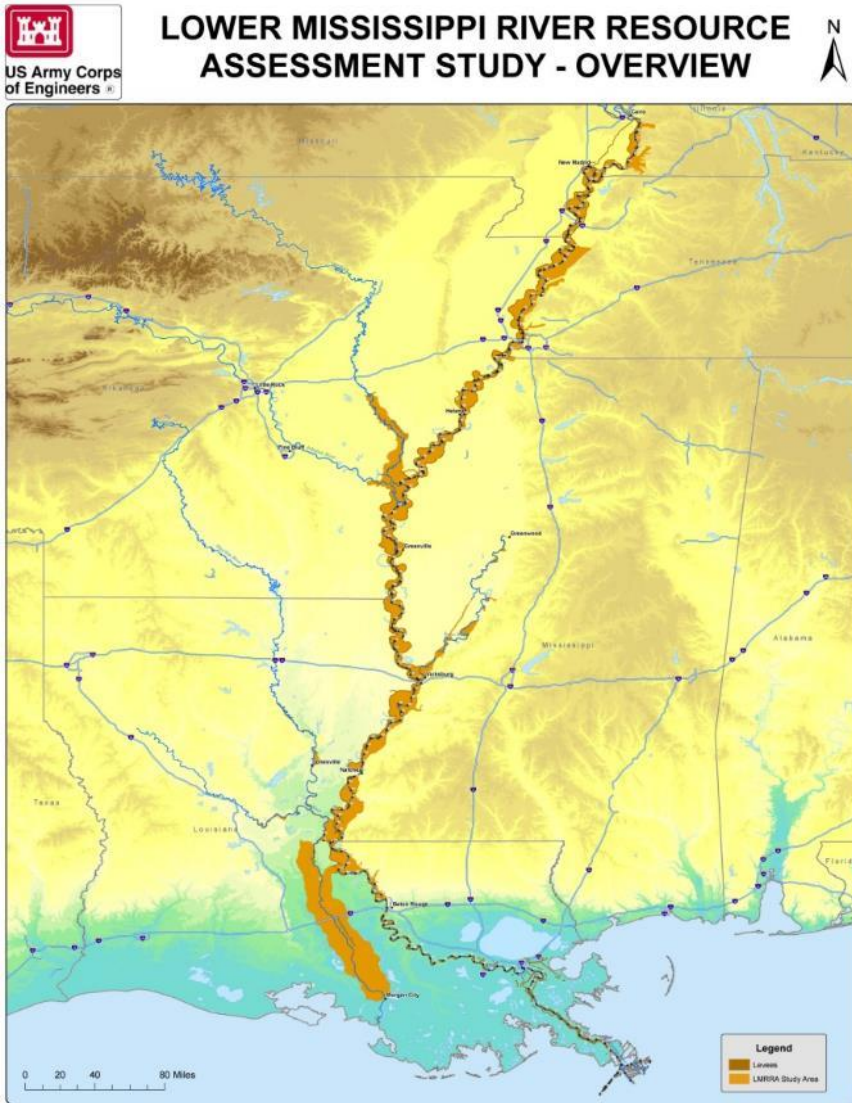
*The Nature Conservancy's Great Rivers Partnership is the lead sponsor.*

Collaborative effort includes:





# Lower Mississippi River Resource Assessment



From River Mile 953 near Cairo, Illinois, to River Mile 0 (Head of Passes)

Includes the land inside the MR&T levees or natural high ground (batture)



# Information Assessment Conclusions

**Completed and approved in October 2013**

**Sediment** – Need consistent monitoring protocols and more locations; need analytical tool for sediment dynamics in the river

**Water quality** – Need standard monitoring protocols entire length of river

▪ **Data storage and availability** – Data is held by individual agencies and organizations; need a central repository for all of the information on the Lower River

▪ **Tributary management** – States are best able to manage at this scale

# Recreation Assessment Conclusions

**Final review by Mississippi Valley Division has been completed.**

- **Boat Ramps** – we need more along the Mississippi River and they need to be designed for smaller craft and launch into safe areas e.g. side channels and backwaters.
- **Parks & Vistas** – many local communities would like to develop their riverfronts and provide parks and picnic areas with river views
- **Riverboat Landings** – the return of riverboat cruises to the Mississippi River has brought tourist dollars into small communities, but several need riverboat landings that are handicapped accessible and usable at varying water levels

# Recreation Assessment Conclusions

- **Lodging and Dining** – The Great River Road Scenic Byway extends from New Orleans to Minnesota, but there is a lack of hotels, motels, RV parks campgrounds and restaurants along the lower portion of the byway.
- **Outfitters and Guides** – Tourists coming to the area for other purposes would need these services to add a day of biking, paddling or bird watching to their trips.
- **Marketing**– The region has a wide variety of attractions that bring in millions of tourists. Marketing can increase the number of tourists and help them develop a more comprehensive itinerary. The National Geographic Society Geotourism Destination project will meet some of this need.

# Recreation Assessment Conclusions

- **Bike Trails** – There is a demand for dedicated bicycle trails both in and around cities and towns and along the Mississippi River.
- **Interpretation** – Parks, trails and marketing materials create opportunities to inform and educate the public about the river and its value.
- **Safety** – Better boat ramps, dedicated bike trails, outfitters and guides, and more information about recreational opportunities all enhance safety.



# Habitat Assessment

The Habitat Assessment has undergone agency technical review and will be submitted to MVD next week for approval to release for public review. Public review is scheduled for October 2014.

## General Habitat Needs:

- Restore habitat quality to batture forests
- Restore side channels, backchannels and oxbow lakes
- Promote native species/ control invasive species
- Conserve sandbars
- Conduct comprehensive reach studies to examine all opportunities within 30 to 40-mile river reaches
- Tributary studies (e.g., channel instability)

# Watershed Plan

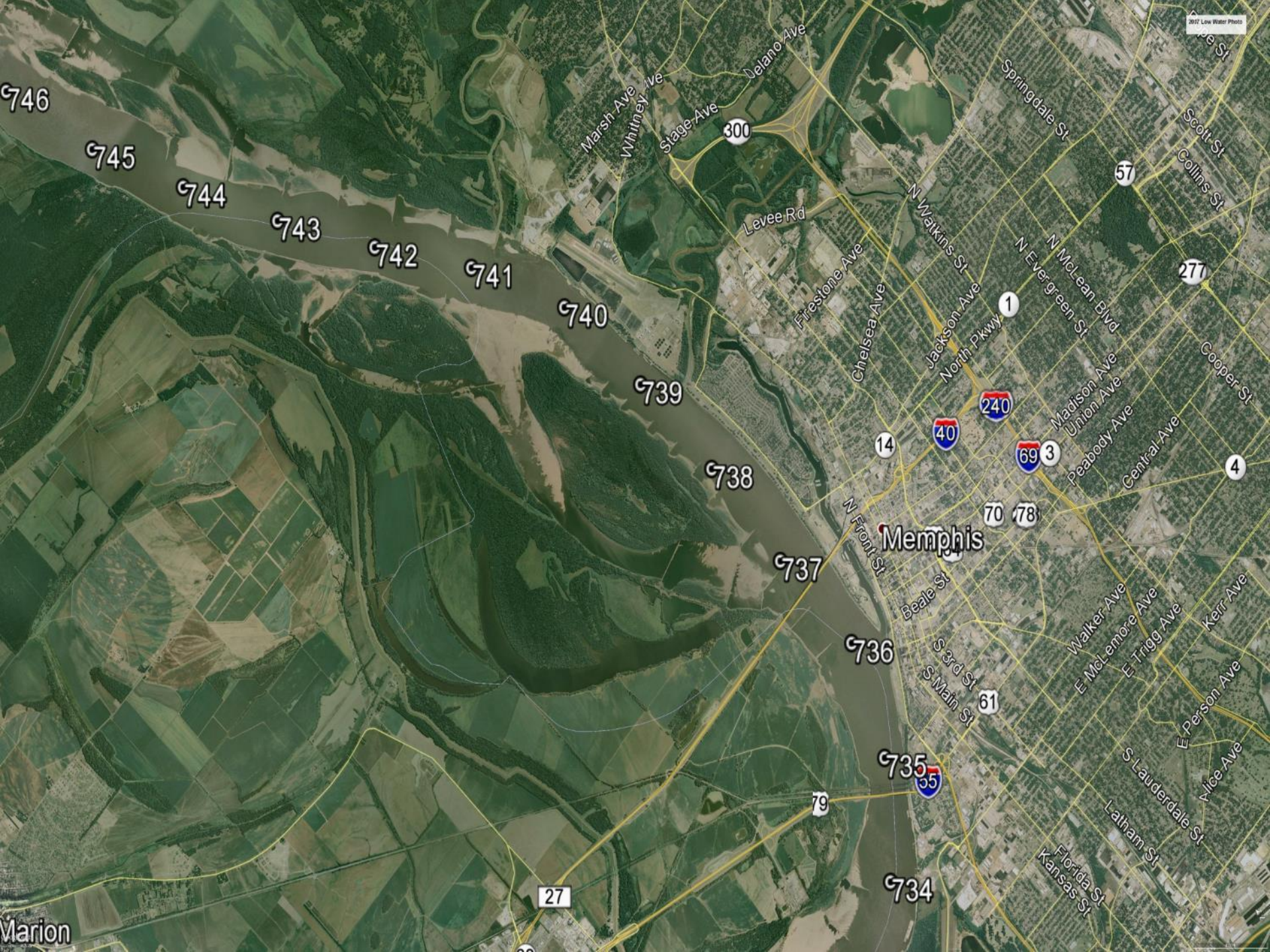
Scheduled for public review in November/December 2014.

Will provide recommendations to meet the identified needs.

It will recommend projects for the Corps of Engineers, USFWS, National Park Service, state agencies, local entities, non-governmental organizations and commercial enterprises.

We will be looking for letters of support.





746

745

744

743

742

741

740

739

738

737

736

735

734

Marsh Ave  
Whitney Ave

Stage Ave  
300

Delano Ave

Levee Rd

Firesome Ave

Chelsea Ave

N Watkins St  
Jackson Ave

North Pkwy  
1

40

240

69

3

14

70

78

Memphis

N Front St  
Beale St

S 3rd St  
S Main St

51

Walker Ave  
E McLeMore Ave

E Trigg Ave

Kerr Ave

E Person Ave

S Lauderdale St  
Latham St

Florida St  
Kansas St

Springdale St

57

Scott St  
Collins St

271

Cooper St

4

27

Marion



# LOOSAHATCHIE-REDMAN BAR ENVIRONMENTAL PROJECT

TENNESSEE  
SHELBY COUNTY

TENNESSEE  
SHELBY COUNTY

ARKANSAS  
CRITTENDEN COUNTY

ARKANSAS  
CRITTENDEN COUNTY

TENNESSEE  
SHELBY COUNTY



RESTRICTED NOTICE

The Redman Point - Loosahatchie Bar Environmental Project is a collaborative effort of the LMRC, USACE, and USFWS.





# Questions?