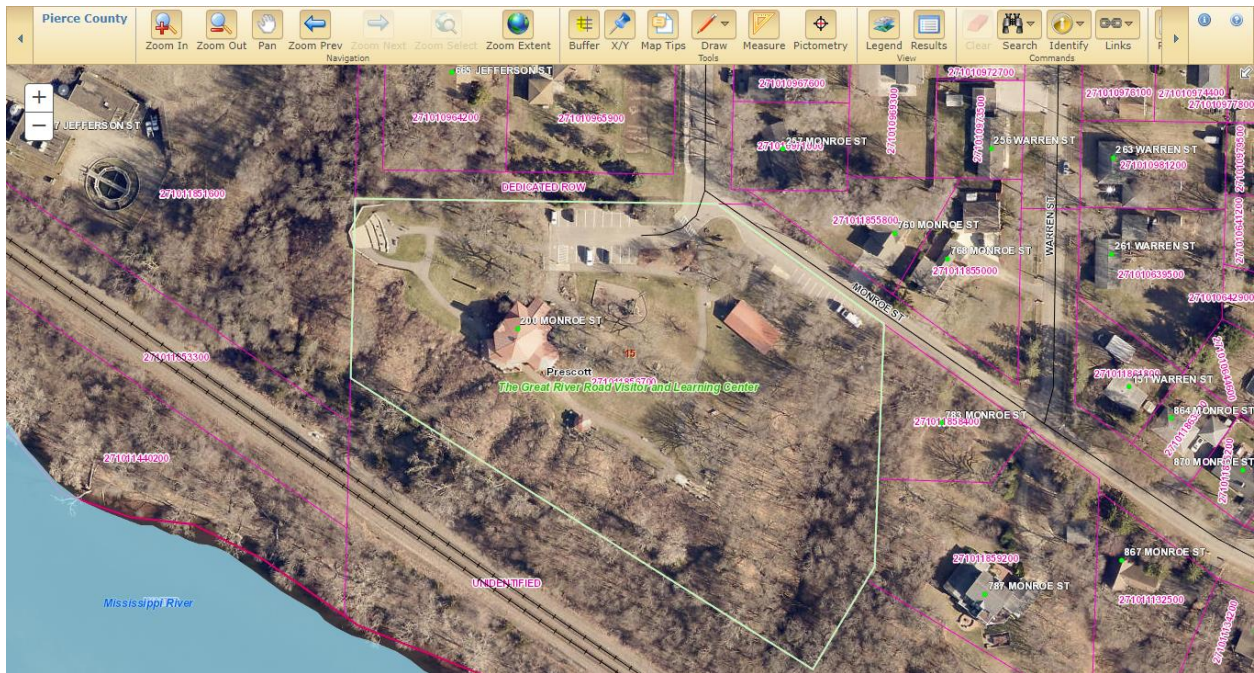
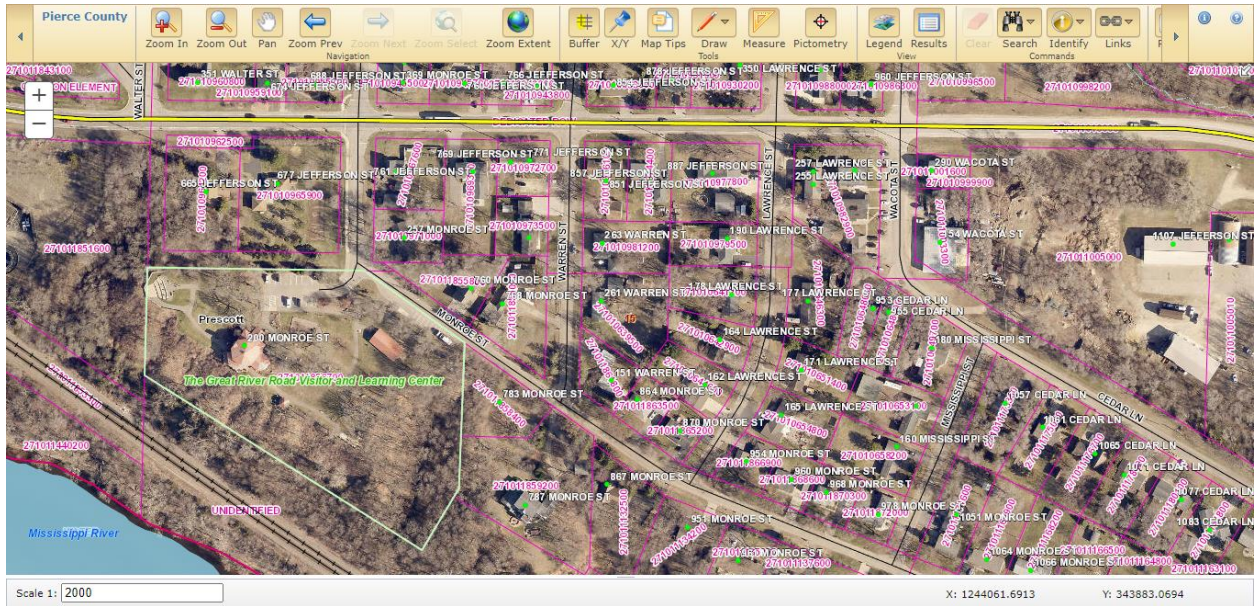


Documentation requested for each Interpretive Center:

- Location/Mapping
 - Tax parcel maps – show extent of the property, access points, parking, etc. (pg. 2)
 - GoogleMaps directions/view – show main highways, should provide directions to and from the Great River Road (pg. 3)
- Signing
 - GIS map – provide details like latitude/longitude, location, age, condition, etc. (pg. 4)
 - Picture inventory – include all signs leading to/from the Great River Road to the IC (ahead, at/turn, etc.) (pgs. 5-6)

Tax parcel maps
(Show extent of the property, access points, parking, etc.)



GoogleMaps directions/view

(Show main highways, should provide directions to and from the Great River Road)

← from Freedom Park, 200 Monroe St, Prescott, WI 5... to 12611 Great River Rd, Prescott, WI 54021

2 min (1.0 mile)
via WI-35 S/Great River Rd
Fastest route now due to traffic conditions

Freedom Park
200 Monroe St, Prescott, WI 54021

- ↑ Head east toward Monroe St
190 ft
- ← Turn left to stay on Monroe St
279 ft
- ↪ Turn right at the 1st cross street onto WI-35 S/Great River Rd/Jefferson St
Continue to follow WI-35 S/Great River Rd
0.9 mi

12611 Great River Rd
Prescott, WI 54021

← from Freedom Park, 200 Monroe St, Prescott, WI 5... to Hastings, Minnesota 55033

3 min (1.0 mile)
via Great River Rd
Fastest route now due to traffic conditions

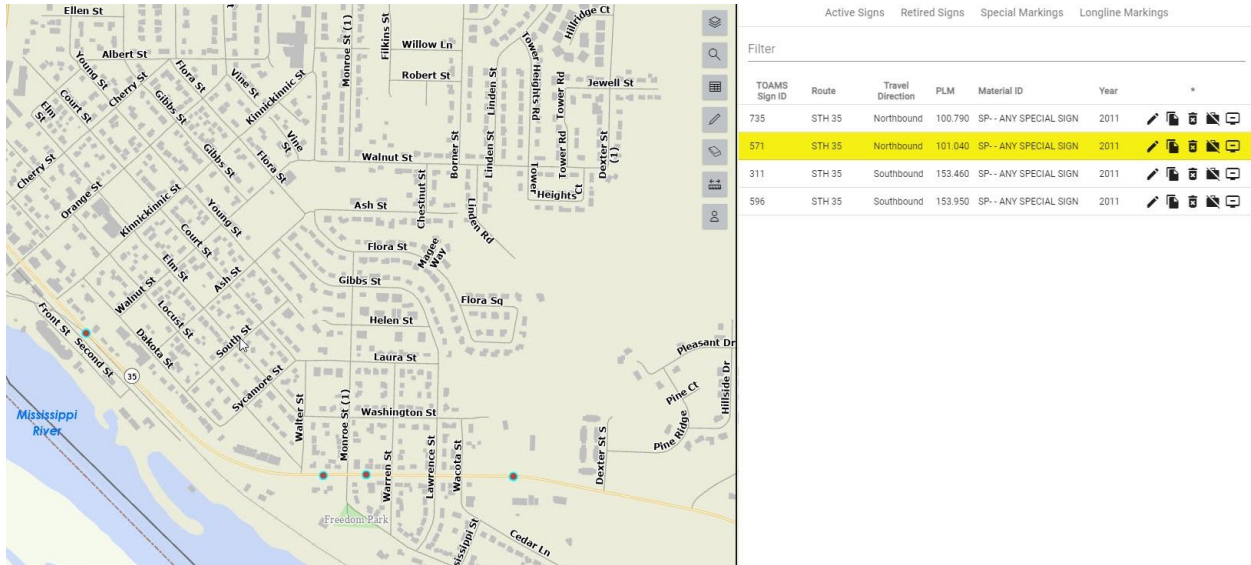
Freedom Park
200 Monroe St, Prescott, WI 54021

- ↑ Head east toward Monroe St
190 ft
- ← Turn left to stay on Monroe St
279 ft
- ↪ Turn left at the 1st cross street onto Great River Rd/Jefferson St
Continue to follow Great River Rd
0.8 mi
- ↪ Turn left onto US-10 W/Great River Rd/I-94 ALT
Entering Minnesota
0.2 mi

Hastings
Minnesota 55033







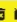









Signing – GIS map

(Provide details like latitude/longitude, location, age, condition, etc.)



Active Signs Retired Signs Special Markings Longline Markings

Filter

TOAMS Sign ID	Route	Travel Direction	PLM	Material ID	Year	
735	STH 35	Northbound	100.790	SP-- ANY SPECIAL SIGN	2011	   
571	STH 35	Northbound	101.040	SP-- ANY SPECIAL SIGN	2011	   
311	STH 35	Southbound	153.460	SP-- ANY SPECIAL SIGN	2011	   
596	STH 35	Southbound	153.950	SP-- ANY SPECIAL SIGN	2011	   

Signing – Picture inventory

(Include all signs leading to/from the Great River Road to the IC (ahead, at/turn, etc.)

Northbound WIS 35
1/4 mile ahead signage



Northbound WIS 35
at/left turn signage



Southbound WIS 35
1/2 mile ahead signage



Southbound WIS 35
at/right turn signage



