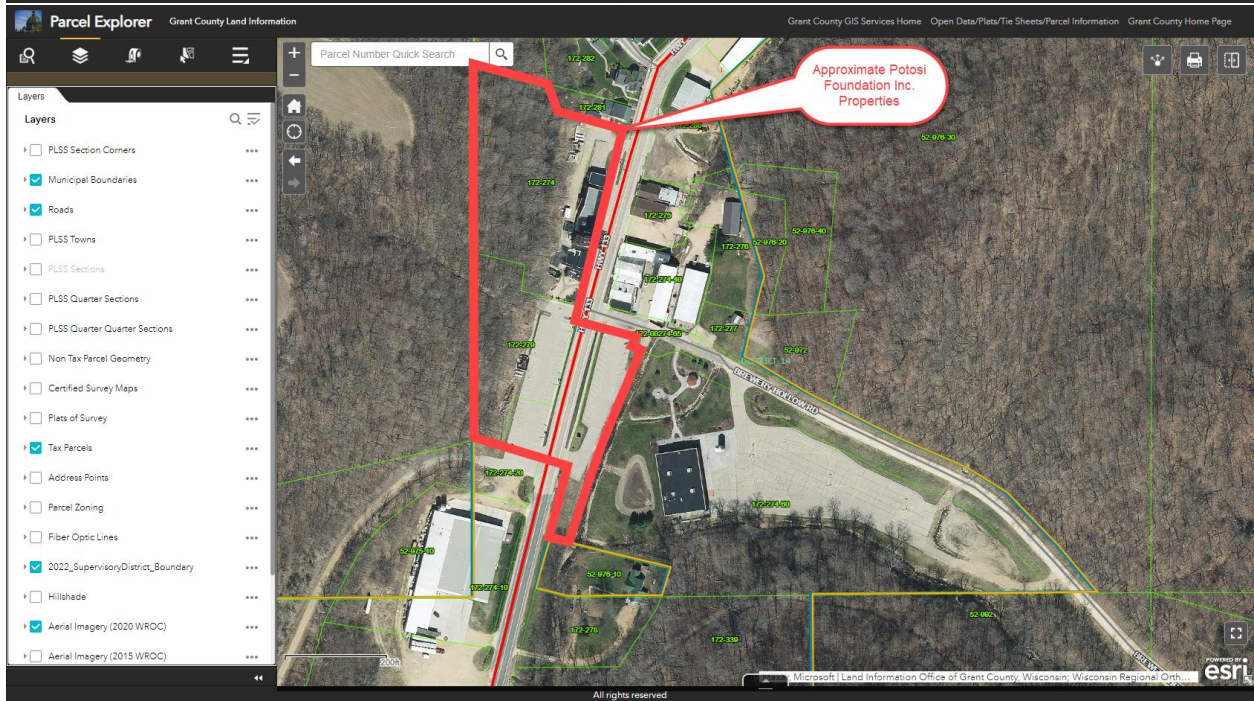
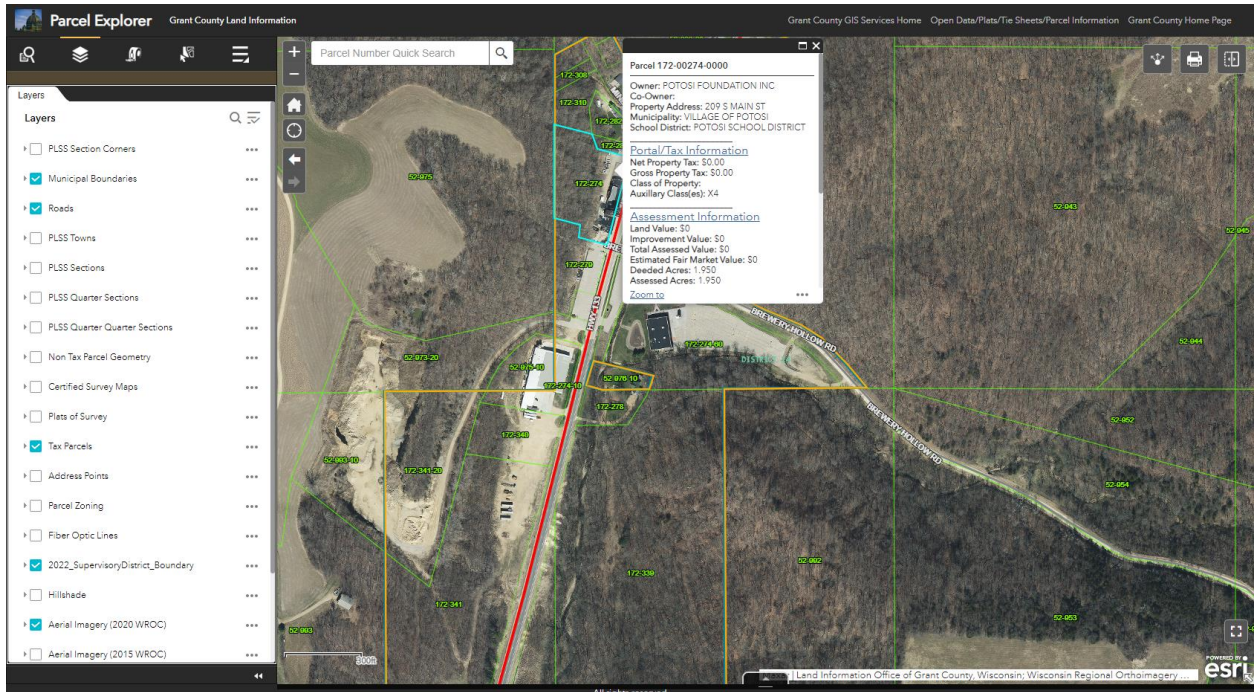


Documentation requested for each Interpretive Center:

- Location/Mapping
 - Tax parcel maps – show extent of the property, access points, parking, etc. (pg. 2)
 - GoogleMaps directions/view – show main highways, should provide directions to and from the Great River Road (pg. 3)
- Signing
 - GIS map – provide details like latitude/longitude, location, age, condition, etc. (pg. 4)
 - Picture inventory – include all signs leading to/from the Great River Road to the IC (ahead, at/turn, etc.) (pgs. 5-6)

Tax parcel maps

(Show extent of the property, access points, parking, etc.)



GoogleMaps directions/view

(Show main highways, should provide directions to and from the Great River Road)

The image displays two screenshots of Google Maps showing directions between two locations in Potosi, WI: 6500-6727 Hiawatha Pioneer Trl and 209 S Main St.

Top Screenshot (Northbound):

- Route: from 6500-6727 Hiawatha Pioneer Trl, Potosi, WI to 209 S Main St, Potosi, WI 53820
- Duration: 2 min (1.0 mile)
- Directions: via WI-133 S/WI-133 Trunk S. Fastest route now due to traffic conditions.
- Map details: The route is shown in blue, starting at 6500-6727 Hiawatha Pioneer Trl and heading east on WI-133 S/WI-133 Trunk S toward East. A red box highlights a location on Great River Road, 1.0 mile out.

Bottom Screenshot (Southbound):

- Route: from 107 East St, Potosi, WI 53820 to 209 S Main St, Potosi, WI 53820
- Duration: 3 min (1.2 miles)
- Directions: via WI-133 N/Great River Rd/Hiawatha Pioneer Trl. Fastest route now due to traffic conditions.
- Map details: The route is shown in blue, starting at 107 East St and heading west on WI-133 N/Great River Rd/Hiawatha Pioneer Trl toward N Main St. A red box highlights a location on Great River Road, 1.2 mile out.

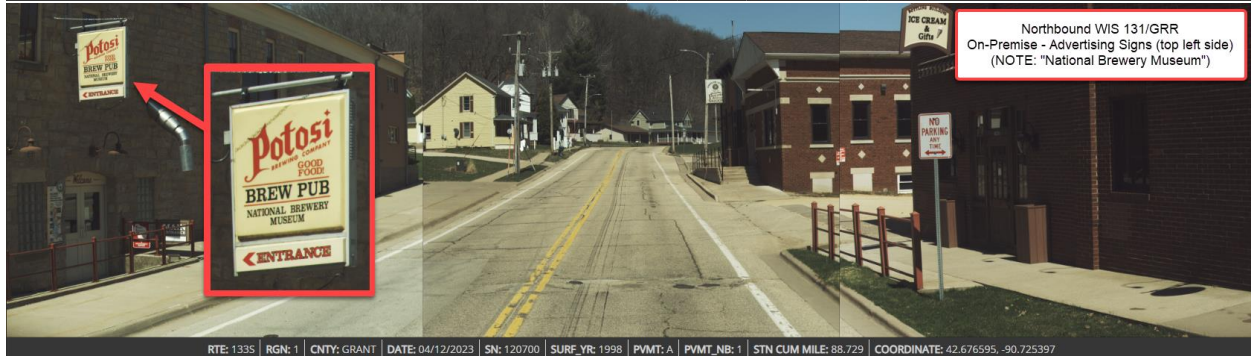
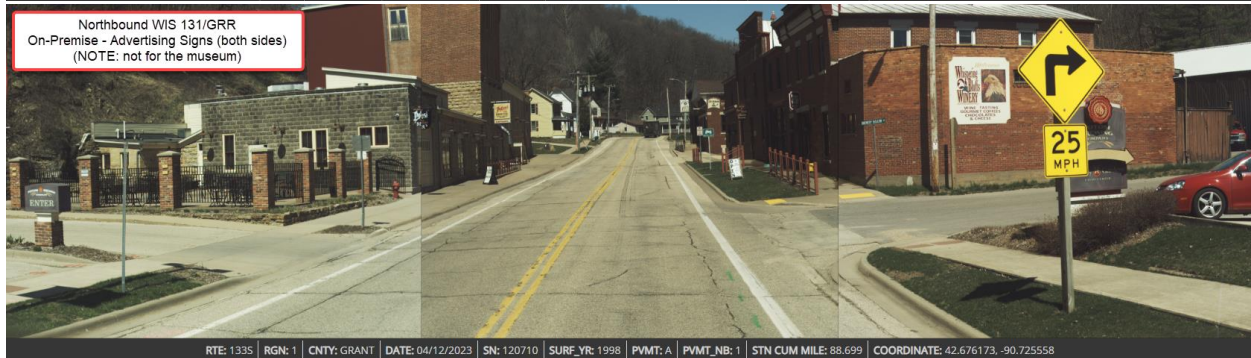
Signing – GIS map

(Provide details like latitude/longitude, location, age, condition, etc.)

NO EXISTING STATE ISSUED SIGNS FOR POTOSI BREWING COMPANY – THEREFORE NO GIS MAP

Signing – Picture inventory

(Include all signs leading to/from the Great River Road to the IC (ahead, at/turn, etc.)





RTE: 133N | RGN: 1 | CNTY: GRANT | DATE: 04/12/2023 | SN: 120700 | SURF_YR: 1998 | PVMT: A | PVMT_NB: 1 | STN CUM MILE: 2.314 | COORDINATE: 42.676464, -90.725498



RTE: 133N | RGN: 1 | CNTY: GRANT | DATE: 04/12/2023 | SN: 120710 | SURF_YR: 1998 | PVMT: A | PVMT_NB: 1 | STN CUM MILE: 2.349 | COORDINATE: 42.675964, -90.725682