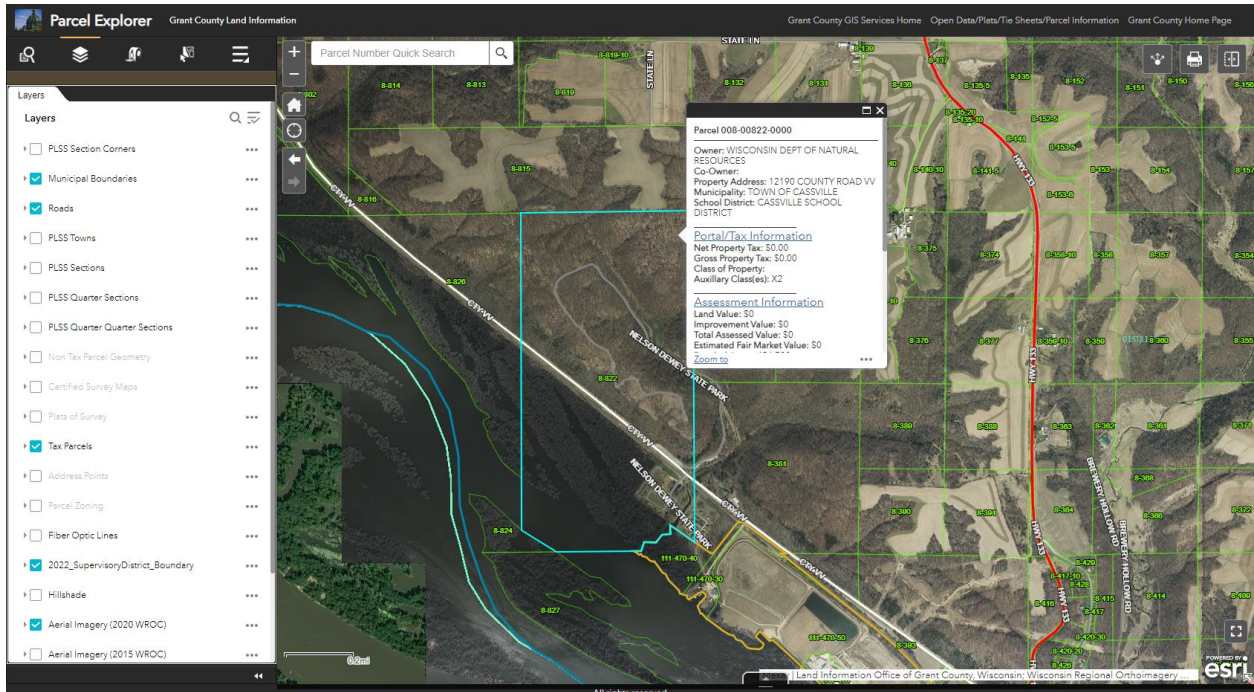


Documentation requested for each Interpretive Center:

- Location/Mapping
  - Tax parcel maps – show extent of the property, access points, parking, etc. (pg. 2)
  - GoogleMaps directions/view – show main highways, should provide directions to and from the Great River Road (pg. 3)
- Signing
  - GIS map – provide details like latitude/longitude, location, age, condition, etc. (pg. 4)
  - Picture inventory – include all signs leading to/from the Great River Road to the IC (ahead, at/turn, etc.) (pgs. 5-8)

## Tax parcel maps

(Show extent of the property, access points, parking, etc.)



## GoogleMaps directions/view

(Show main highways, should provide directions to and from the Great River Road)

The image displays two screenshots of Google Maps showing directions to Stonefield Historic Site from Cassville, WI. Both routes are highlighted in blue and include turn instructions and a '3 min' travel time.

**Northbound GoogleMaps (1.5 mile out) (located on Great River Road/CTH VV)**

from 5871-5801 Hiawatha Pioneer Trl, Cassville, WI 53806 to Stonefield Historic Site, 12195 Co Hwy VV, Cas...

3 min (1.5 miles) via Co Hwy VV  
Fastest route now due to traffic conditions

5871-5801 Hiawatha Pioneer Trl  
Cassville, WI 53806

- Head north on WI-133 N/Great River Rd/Hiawatha Pioneer Trl toward Co Hwy VV  
0.2 mi
- Turn left onto Co Hwy VV  
1.2 mi
- Turn left  
Destination will be on the right  
305 ft

Stonefield Historic Site  
12195 Co Hwy VV, Cassville, WI 53806

**Southbound GoogleMaps (2.3 mile out) (located on Great River Road/CTH VV)**

from Cassville, Wisconsin 53806 to Stonefield Historic Site, 12195 Co Hwy VV, Cas...

3 min (2.3 miles) via Co Hwy VV  
Fastest route now due to traffic conditions

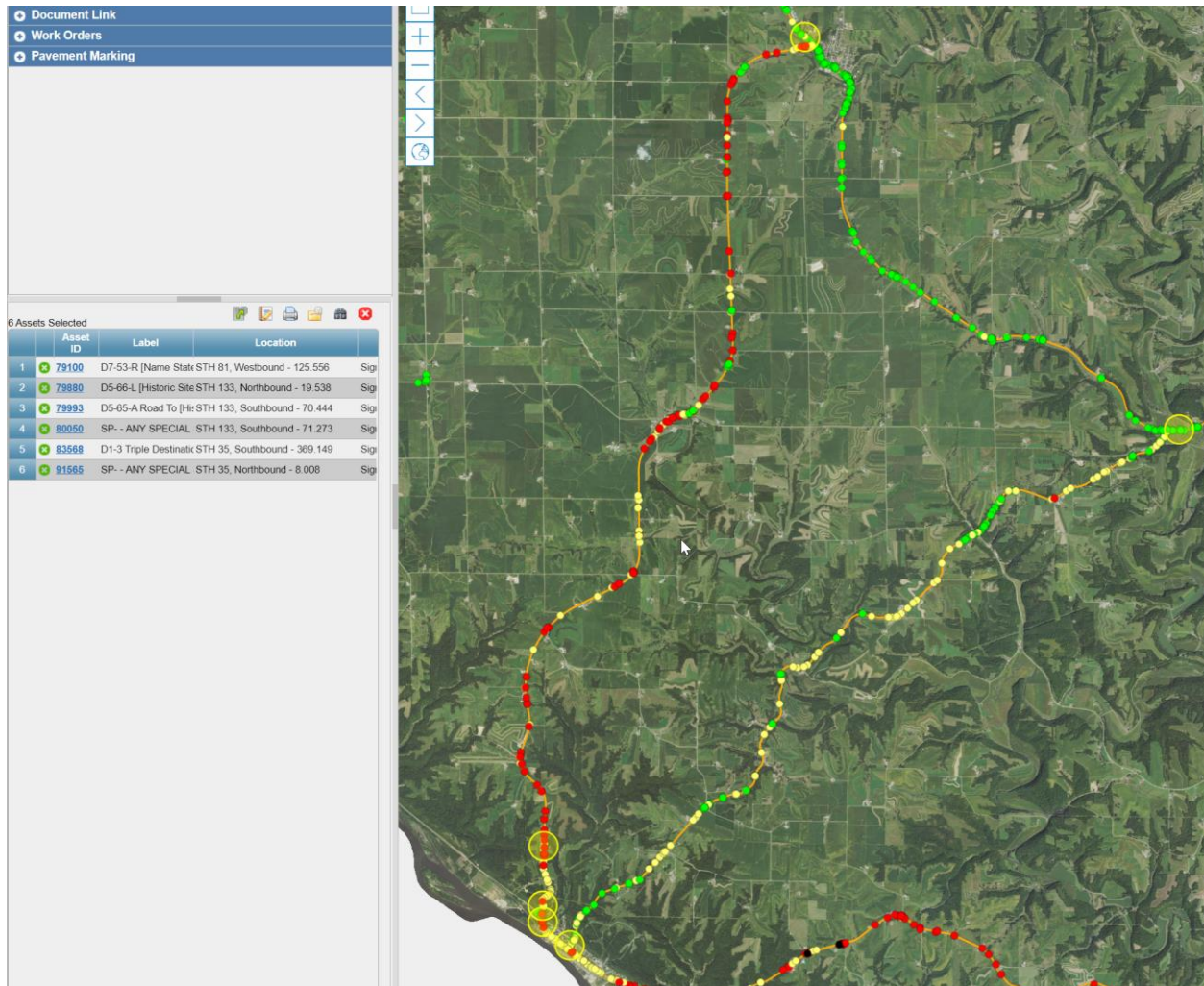
Cassville  
Wisconsin 53806

- Head southwest on Co Hwy VV toward Closing Dam Rd  
2.2 mi
- Turn right  
Destination will be on the right  
305 ft

Stonefield Historic Site  
12195 Co Hwy VV, Cassville, WI 53806

## Signing – GIS map

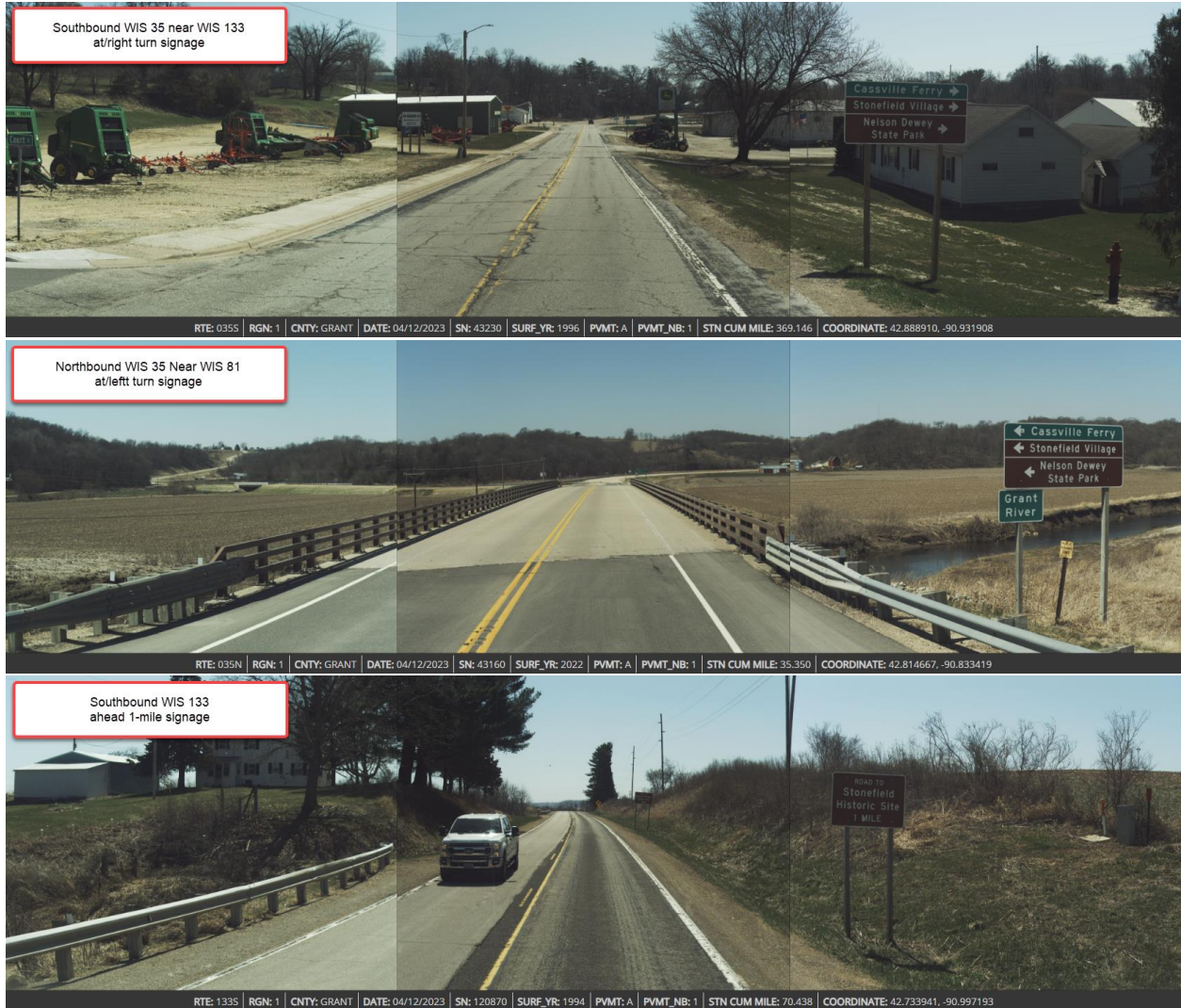
(Provide details like latitude/longitude, location, age, condition, etc.)



One sign that is state issued/installed was not currently logged into GIS – this is noted in the picture section and will be loaded into GIS.

## Signing – Picture inventory

*(Include all signs leading to/from the Great River Road to the IC (ahead, at/turn, etc.)*





Missing from GIS (below picture)





