

## GoogleMaps directions/view

(Show main highways, should provide directions to and from the Great River Road)

**Northbound GoogleMaps (1.5 mile out) (located on Great River Road/CTH VV)**

from 5871-5801 Hiawatha Pioneer Trl, Cassville, WI 53806 to Stonefield Historic Site, 12195 Co Hwy VV, Cas...

3 min (1.5 miles)  
via Co Hwy VV  
Fastest route now due to traffic conditions

5871-5801 Hiawatha Pioneer Trl  
Cassville, WI 53806

- Head north on WI-133 N/Great River Rd/Hiawatha Pioneer Trl toward Co Hwy VV  
0.2 mi
- Turn left onto Co Hwy VV  
1.2 mi
- Turn left  
Destination will be on the right  
305 ft

Stonefield Historic Site  
12195 Co Hwy VV, Cassville, WI 53806

**Southbound GoogleMaps (2.3 mile out) (located on Great River Road/CTH VV)**

from Cassville, Wisconsin 53806 to Stonefield Historic Site, 12195 Co Hwy VV, Cas...

3 min (2.3 miles)  
via Co Hwy VV  
Fastest route now due to traffic conditions

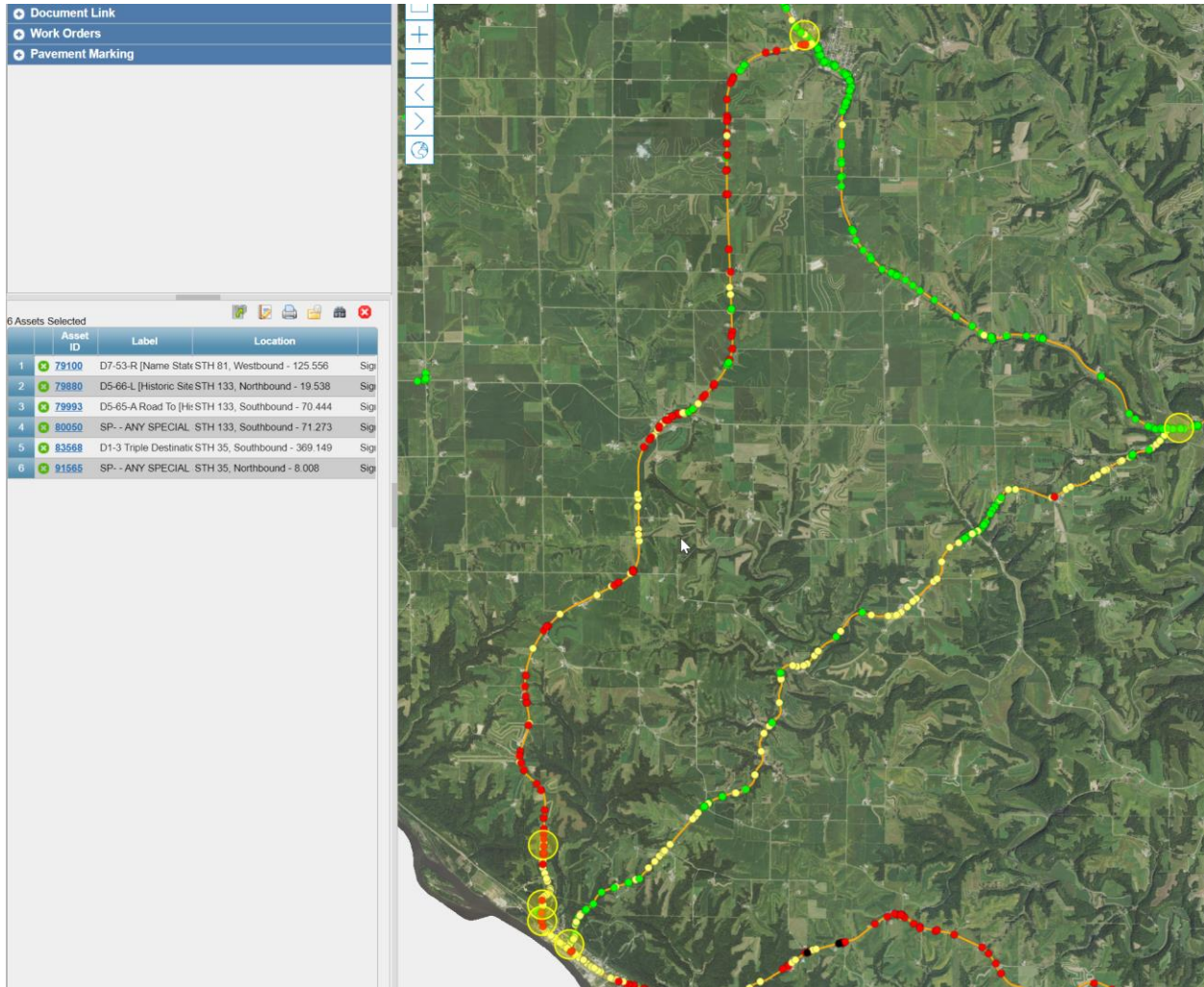
Cassville  
Wisconsin 53806

- Head southwest on Co Hwy VV toward Closing Dam Rd  
2.2 mi
- Turn right  
Destination will be on the right  
305 ft

Stonefield Historic Site  
12195 Co Hwy VV, Cassville, WI 53806

## Signing – GIS map

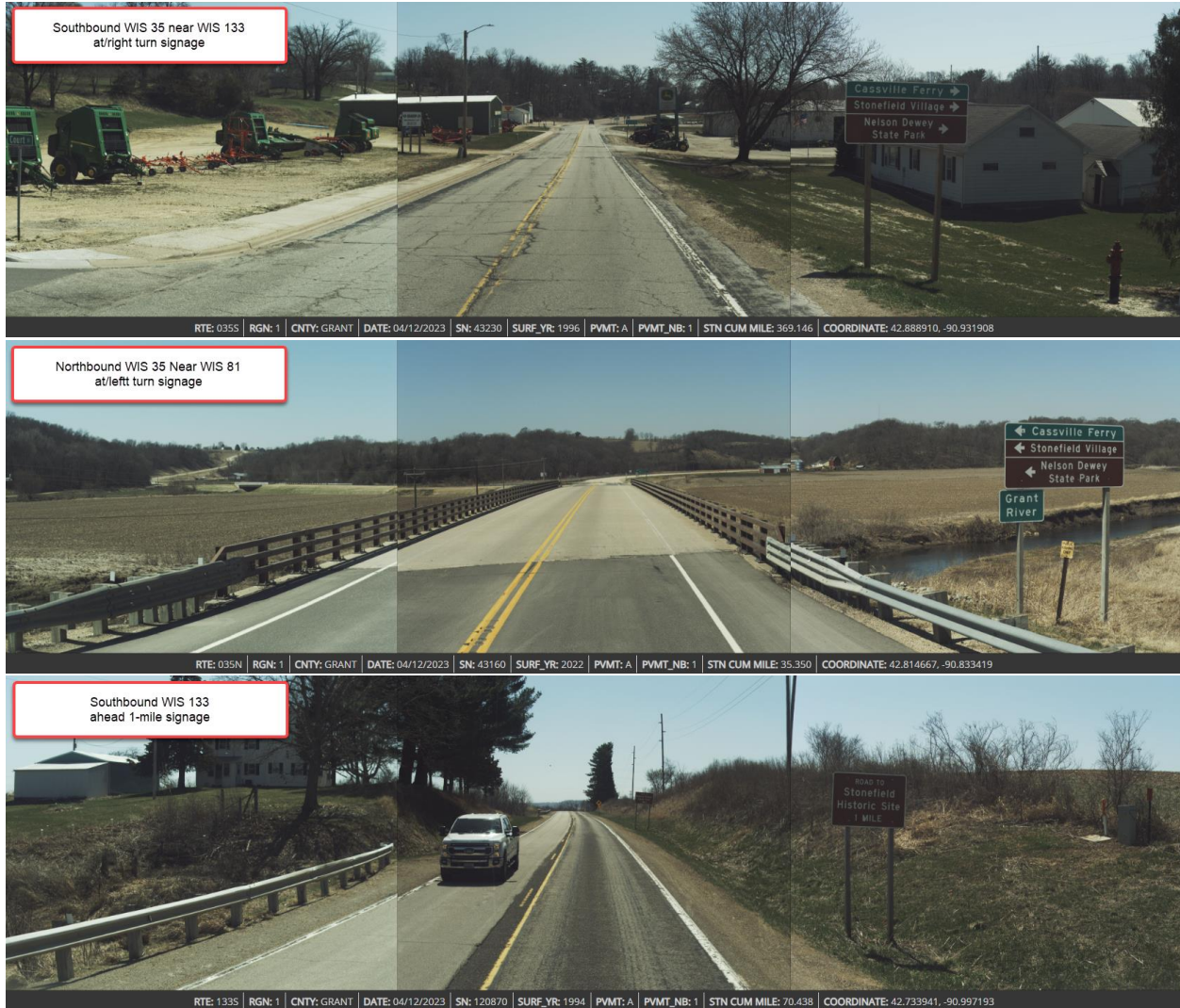
(Provide details like latitude/longitude, location, age, condition, etc.)



One sign that is state issued/installed was not currently logged into GIS – this is noted in the picture section and will be loaded into GIS.

## Signing – Picture inventory

*(Include all signs leading to/from the Great River Road to the IC (ahead, at/turn, etc.)*





Missing from GIS (below picture)





