

SOUTHBOUND

Southbound, on I-55 approaching Exit 99



Southbound, from I-55 @ Exit 99, second sign is on off-ramp, advanced warning signage on I-55 (advanced sign naming inconsistent with this sign)



Southbound, I-55 Business Loop/US 61 South/GRR, at signage on roadway absent, site sign to left



NORTHBOUND

Northbound, from I-55 @ Exit 99, first sign is on off-ramp, no advanced warning signage on I-55 (appears to be missing a sign on I-55 (compared to southbound I-55))



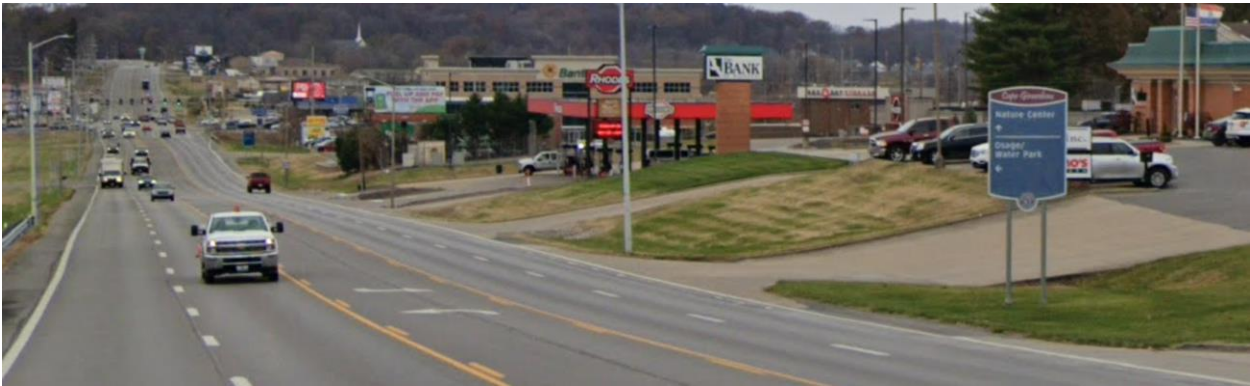
Naming on signs inconsistent with Southbound I-55 signage



Southbound, I-55 Business Loop/US 61 South/GRR, at signage on roadway absent, site sign to left



NORTHBOUND (on I-55 Business Loop/US 61 North/GRR)



City of Cape Girardeau wayfinding signage – advanced warning sign



Northbound on I-55 Business Loop/US 61 North/GRR) ~1,050-feet south of North County Park Road
(inconsistent with Southbound I-55 Business Loop/US 61 South/GRR – no advanced sign)



Northbound, I-55 Business Loop/US 61 North/GRR, at signage on roadway absent, site sign to right

