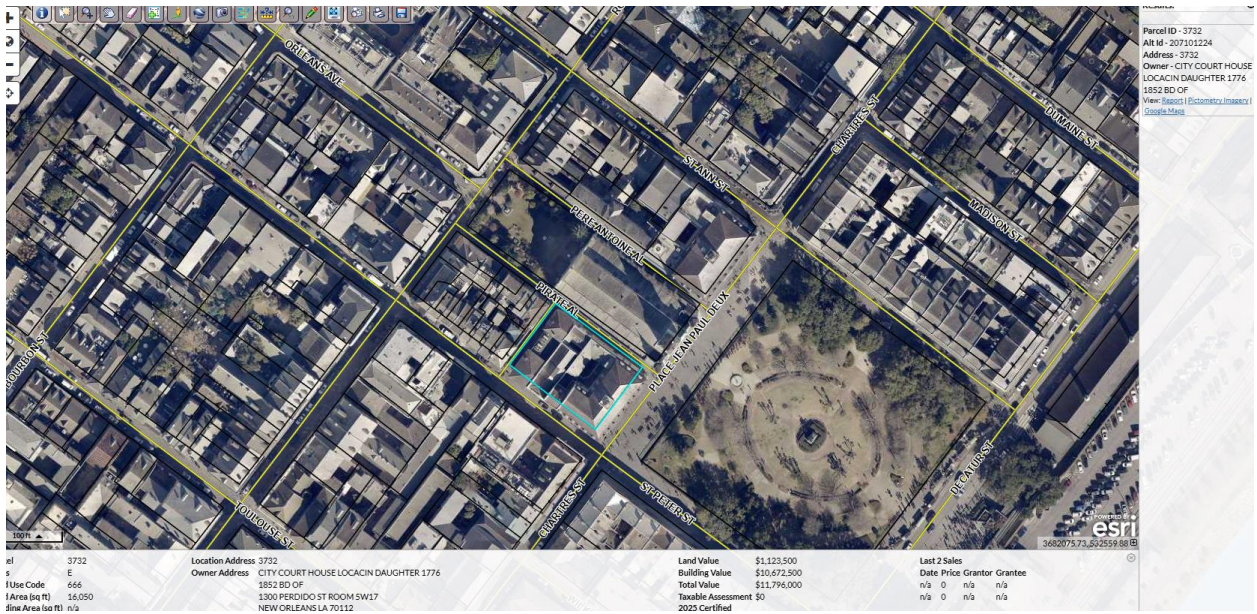


Louisiana State Museum – there are several museum locations in and around the New Orleans French Quarter.

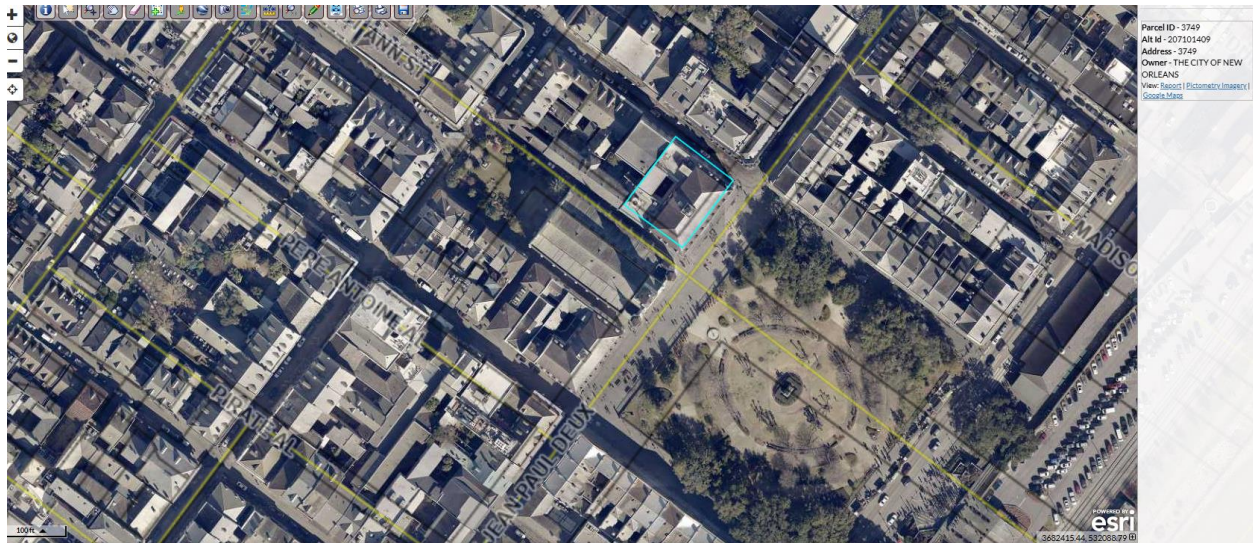
Jazz Museum – Parcel #400-ESPLANADEV



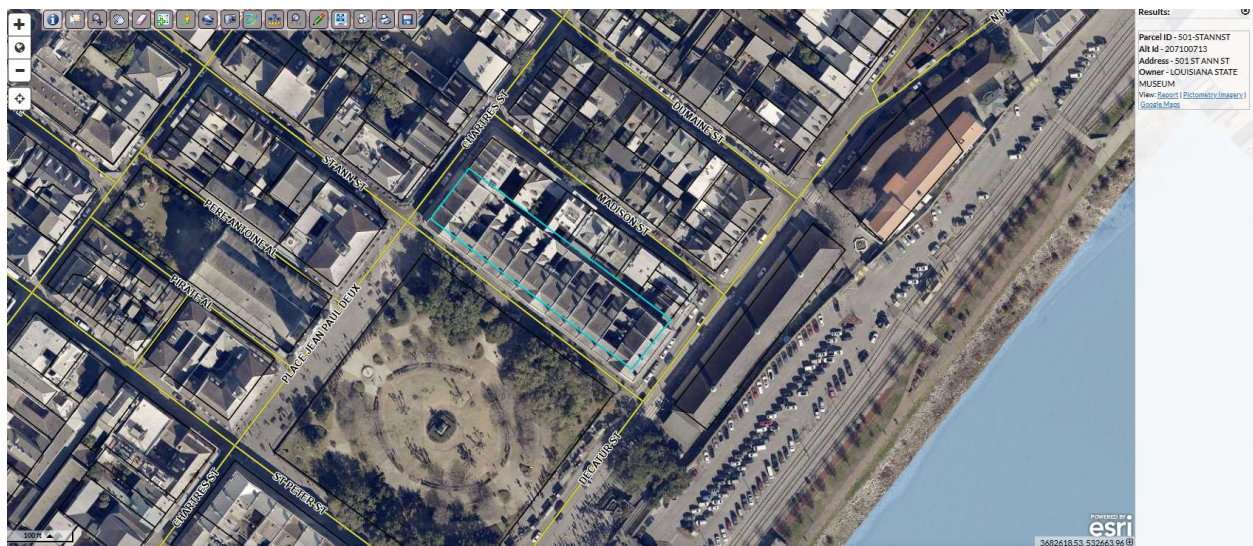
The Cabildo – Parcel #3732



The Presbytere – Parcel# 3749



The 1850 House – Parcel #501-STANNST



The Cabildo, Presbytere, and 1850 House are all within close walking distance of each other, with the New Orleans Jazz Museum approximately a half mile from any of the aforementioned museums. Please consult the links below for parking information:

[Parking in the French Quarter | New Orleans, LA.](#)

[French Quarter Parking Locations](#)